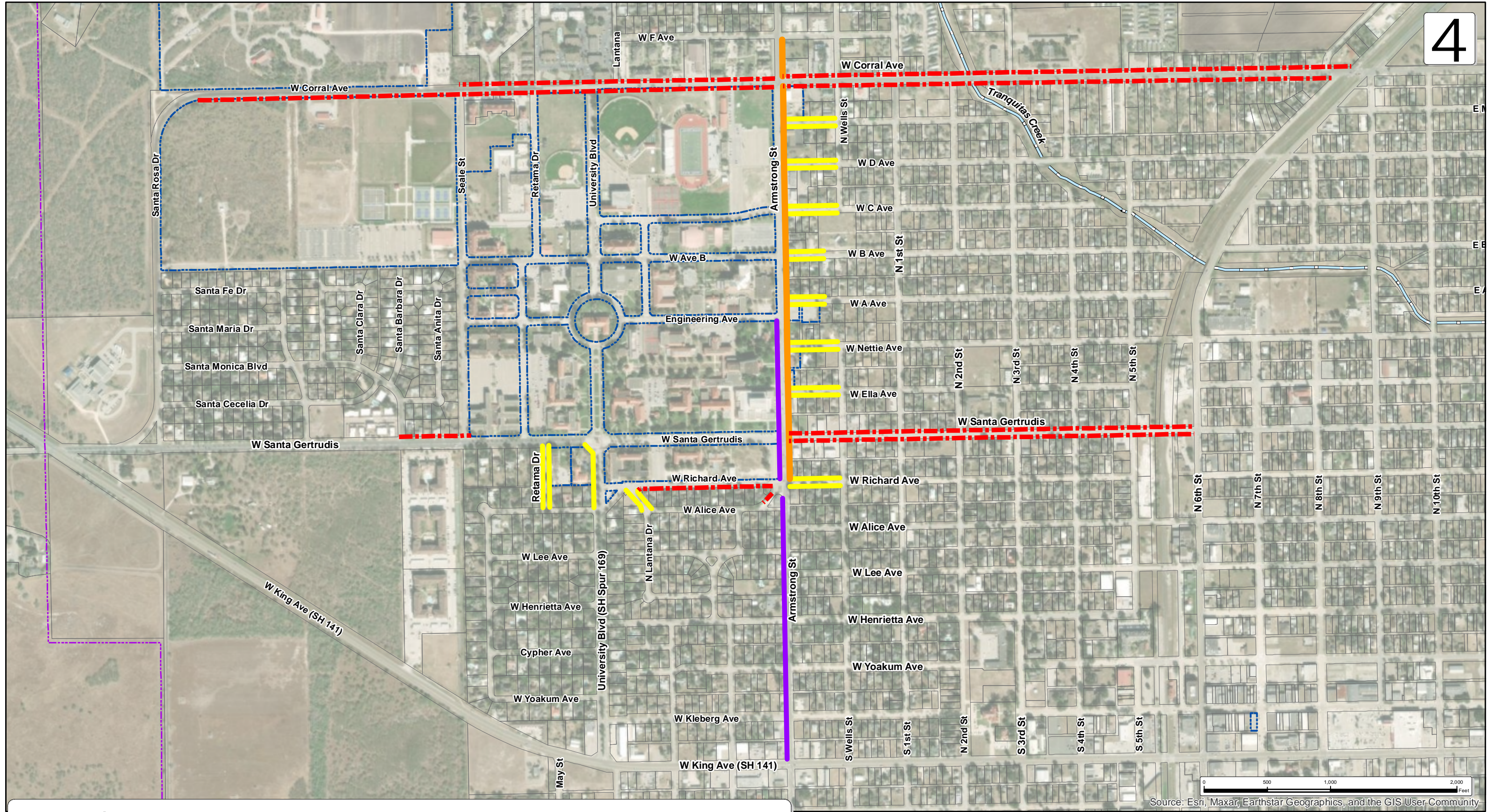


NO PARKING-SEC. 7-6-2. SCHEDULE II, PARKING RESTRICTED ON CERTAIN STREETS



Legend

- - - No Parking Zone (All Times)
- No Parking Zone (7am-7pm MON-SAT)
- No Parking Zone (7am-7pm)
- No Parking Zone (7am-5pm MON-FRI)
- TAMUK
- City Limits

Drawn By: R. PICK
 Last Update: 10/28/2024
 Note: See attached documents for additional information.

DISCLAIMER:
 THIS MAP IS FOR VISUAL PURPOSES ONLY. THE INFORMATION ON THIS SHEET MAY CONTAIN INACCURACIES OR ERRORS. THE CITY OF KINGSVILLE IS NOT RESPONSIBLE IF THE INFORMATION CONTAINED HEREIN IS USED FOR ANY DESIGN, CONSTRUCTION, PLANNING, BUILDING, OR ANY OTHER PURPOSE.

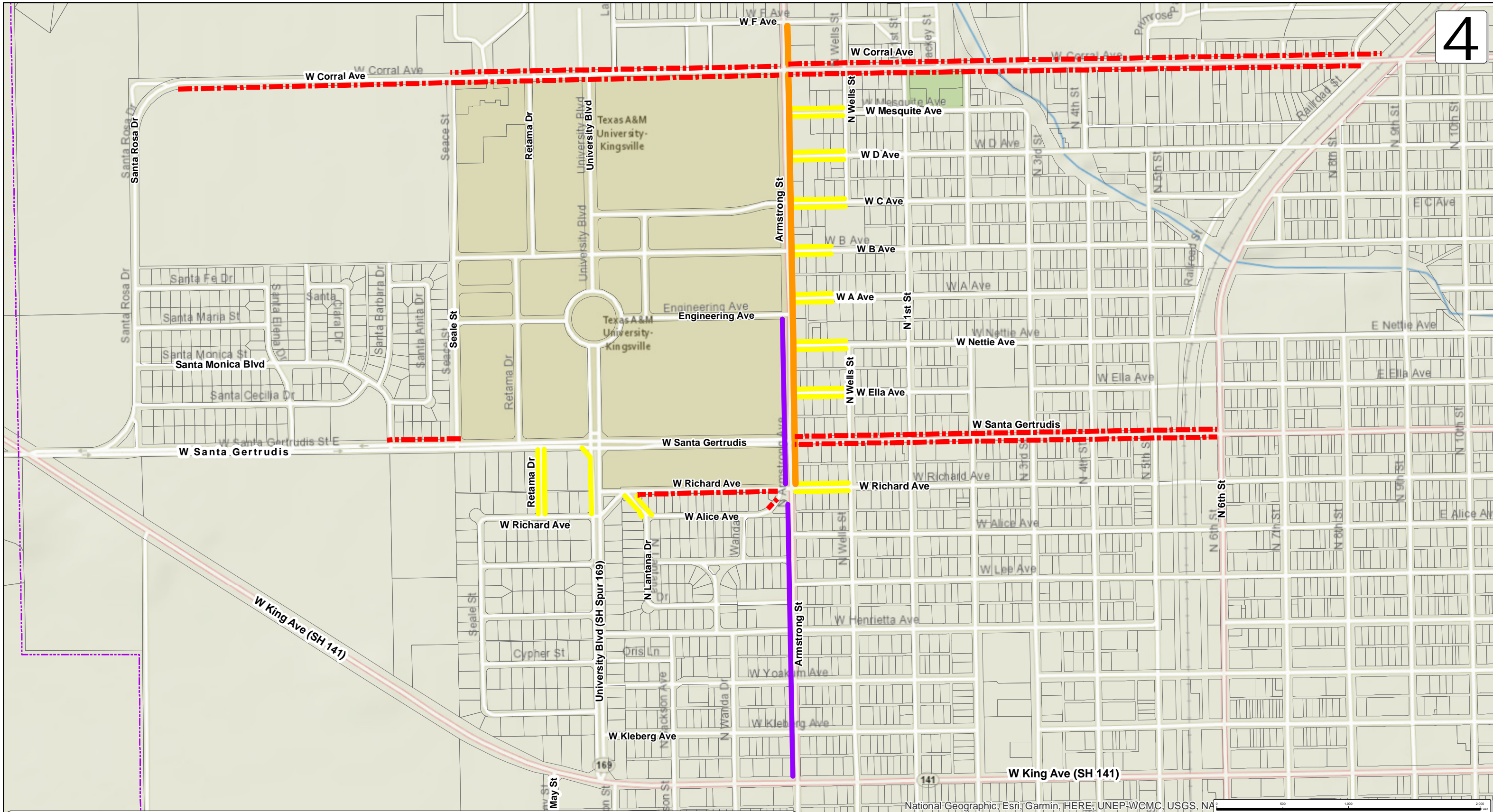
CITY OF KINGSVILLE
ENGINEERING DEPARTMENT
 400 W King Ave; Kingsville, TX 78363
 Office: (361) 595-8007
 Fax: (361) 595-8064

Page: 1 / 1

Source: Esri, Maxar, Earthstar Geographics, and the GIS User Community

NO PARKING-SEC. 7-6-2. SCHEDULE II, PARKING RESTRICTED ON CERTAIN STREETS

4



Legend

- - - No Parking Zone (All Times)
- No Parking Zone (7am-7pm MON-SAT)
- Ownership
- No Parking Zone (7am-7pm)
- No Parking Zone (7am-5pm MON-FRI)
- - - City Limits

Drawn By: R. PICK
 Last Update: 10/28/2024
 Note: See attached documents for additional information.

DISCLAIMER:
 THIS MAP IS FOR VISUAL PURPOSES ONLY. THE INFORMATION ON THIS SHEET MAY CONTAIN INACCURACIES OR ERRORS. THE CITY OF KINGSVILLE IS NOT RESPONSIBLE IF THE INFORMATION CONTAINED HEREIN IS USED FOR ANY DESIGN, CONSTRUCTION, PLANNING, BUILDING, OR ANY OTHER PURPOSE.



CITY OF KINGSVILLE
ENGINEERING DEPARTMENT
 400 W King Ave, Kingsville, TX 78363
 Office: (361) 595-8007
 Fax: (361) 595-8064